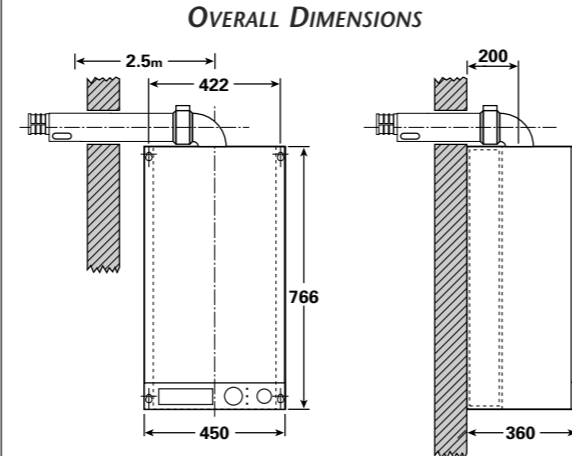


		MODEL CSI SYSTEM AAA
INPUT MAX-MIN NETT	Btu/h kW	84.500 - 44.500 24.8 - 13.0
OUTPUT MAX-MIN ADJUSTABLE	Btu kW	87.200 - 45.700 25.6 - 13.4
MAX/MIN NETT EFFICIENCY		103.1/96.8%
EXPANSION VESSEL	l	8/1
MAX CENTRAL HEATING TEMPERATURE	°C	90°
CONNECTION		
FLOW & RETURN COPPER	mm	22
GAS CONNECTION	mm	15
CONDENSING PIPE 3/4 PUSH FIT		
WEIGHT	Kg	42
FLUE SIZE	mm	100
ELECTRICAL MAINS SUPPLY		240v 50hz FUSED 3 amp
SEDBUK	Nat Gas LPG	A BAND A BAND A
	%	90.7 92.7



CONDITIONS OF 3 YEAR WARRANTY - only on purchases after 01/09/05. Boiler must be correctly installed. Boiler must be commissioned by a Corgi registered engineer. Boiler must be registered with Ravenheat upon purchase (so 3 year warranty can be activated, band A models only). Boiler must be correctly maintained and serviced by a qualified, competent person. For any other information please refer to user guide and installation instructions.

benchmark Ravenheat is a member of the Benchmark initiative and fully supports the aims of the programme. Benchmark has been introduced to improve the standards of installation and commissioning of central heating systems in the UK and to encourage the regular servicing of all central heating systems to ensure safety and efficiency.

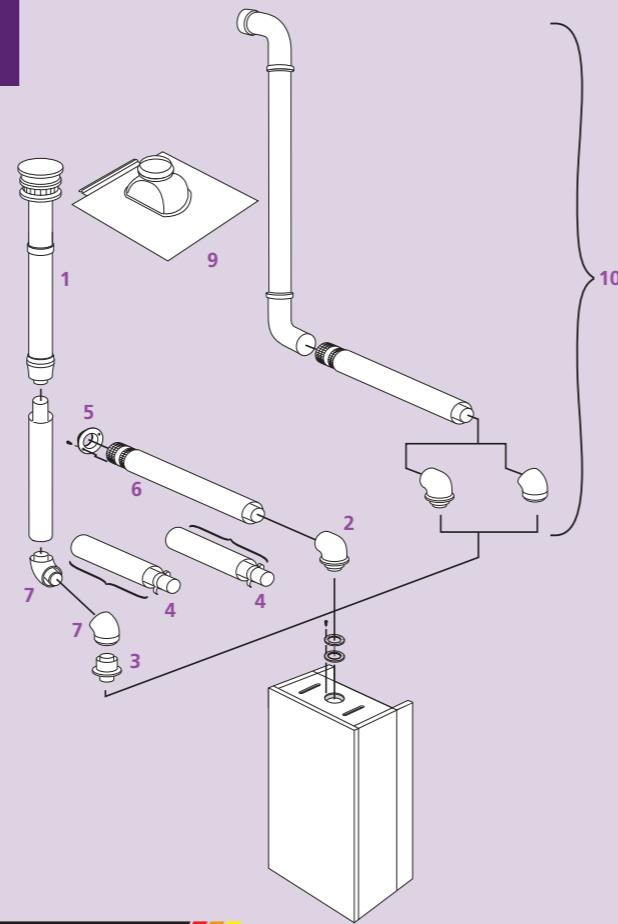
Flue Options

The CSI Primary band A requires a standard 1 metre horizontal flue kit, or a vertical flue accessory kit which can be extended to 2.5 metres horizontal or 3.5 metres vertical.

The above flue arrangements should fit most requirements however, alternative systems (twin or 125mm) are available for longer flue distances on request.

100mm CONCENTRIC FLUE SYSTEM

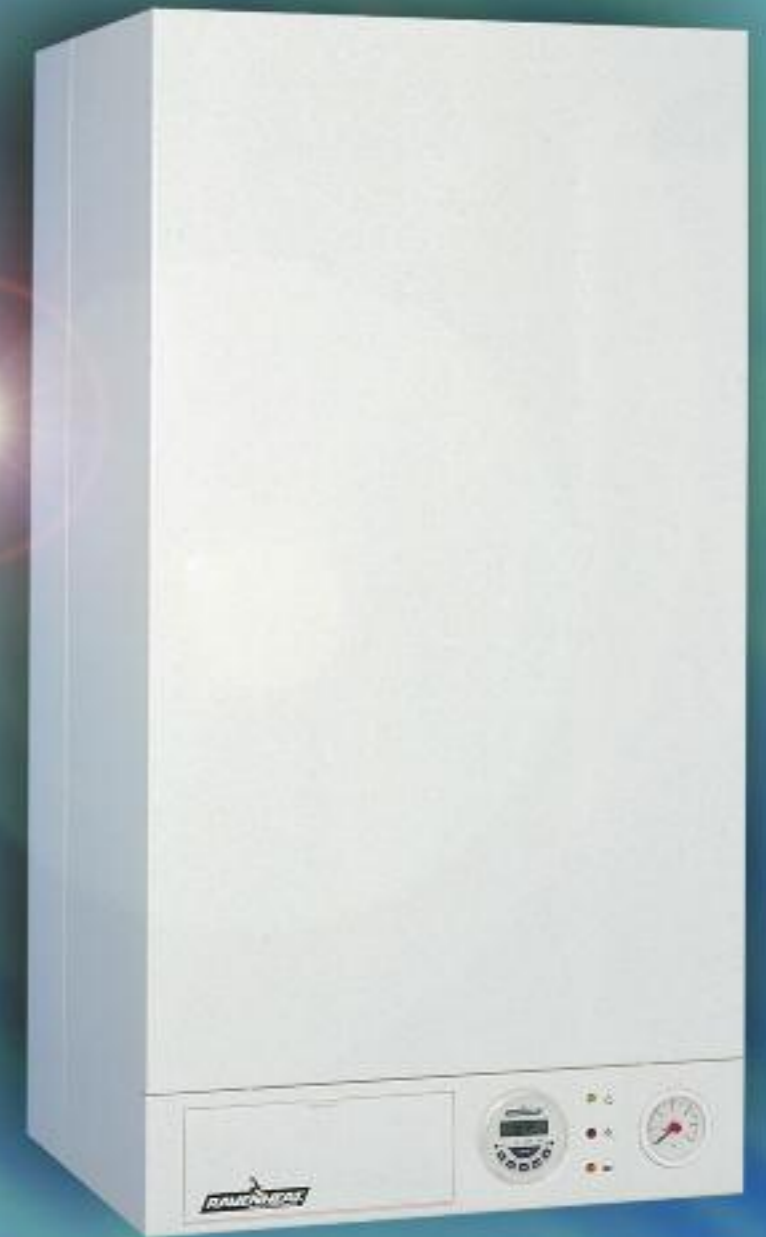
PART	DESCRIPTION	BARCODE	RAVENHEAT PART NO
1+3 +	Vertical flue terminal kit straight flue header (vertical starter pack)	5060022141995 + 5060022141186	N5094130 + 5094110B
2	90 deg boiler bend	5060022141209	CSIFB
3	Straight flue header	5060022141186	5094110B
4	1000mm flue extension	5060022141339	NFE
5	External flue collar		Supplied with No 6
6	Horizontal flue kit complete with boiler bend	5060022141230	CSIFKB
7	45 deg in line bend	5060022141247	N45FBI
7	90 deg in line bend	5060022141315	N90FBI
9	Vertical lead flashing sleeve - pitched roof	5060022141063	0019TEG06005/0
10	Plume kit	5060022143142	1019TER11010/0



Chartists Way, Morley, Leeds LS27 9ET. Telephone: +44 (0)113 252 7007. Fax: +44 (0)113 238 0229
Website: www.ravenheat.co.uk E-mail: sales@ravenheat.co.uk

CONDENSING SYSTEM BOILER

the intelligent boiler with built-in energy management system



Replace your old inefficient boiler and start saving money on your fuel bills



HELPING YOU AND THE ENVIRONMENT

Summary of Technical Benefits

The CSI System Condensing Boiler provides low cost heating solutions, for comfortable living with exact operating settings for efficient energy control. At 97% efficient, it will give savings of over 30% on fuel bills against an old cast iron boiler.

Compare our nett efficiencies (back page) input/output with that of our competitors – the savings speak for themselves!

More Efficient, Reduced Emissions

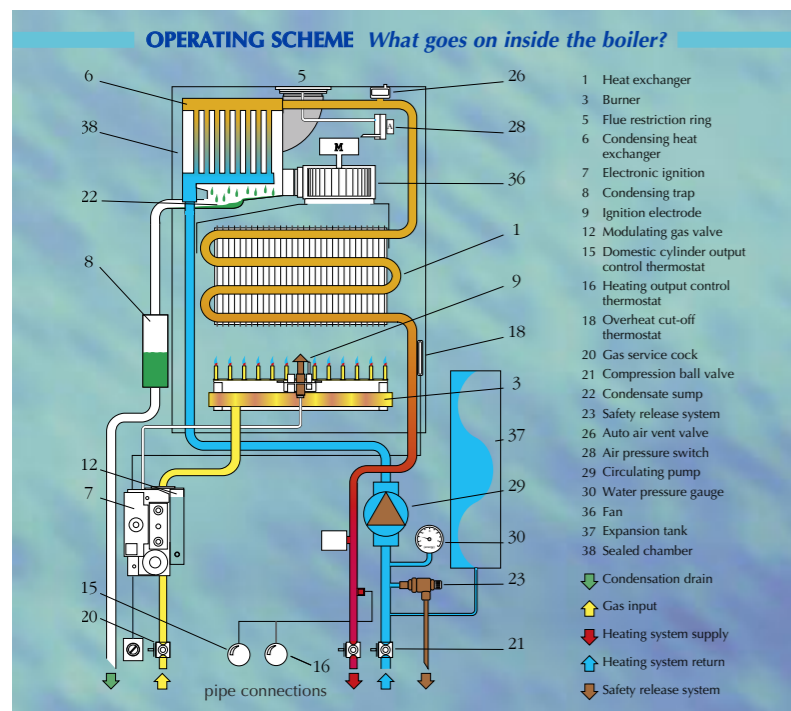
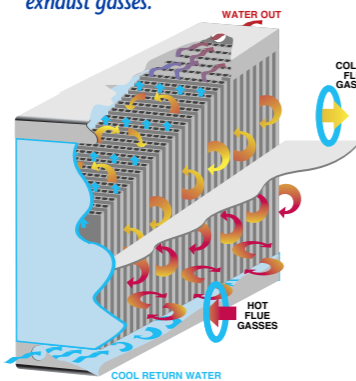
With the depletion of the rain forests and commitments by governments worldwide to a reduction in greenhouse gas emissions, users of Ravenheats CSI System Condensing Boilers can be assured that they will be playing a key role in saving energy and ensuring that flue emissions of nitrous oxide and carbon dioxide are kept to a minimum, which is excellent news for the environment.

CERTIFIED TO BOILER EFFICIENCY DIRECTIVE (BED)

Simply Easy to Install

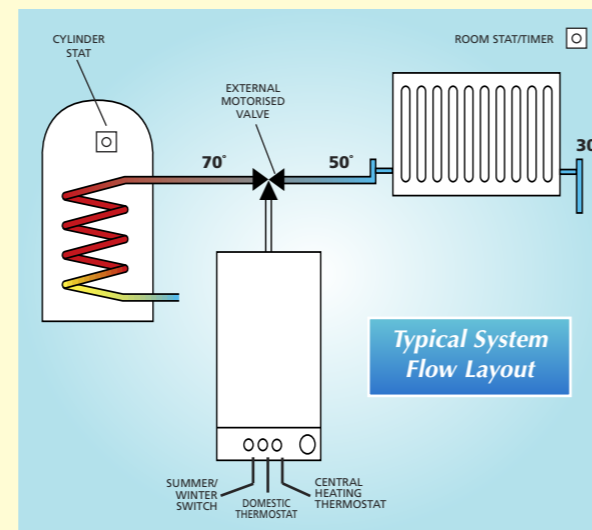
The CSI System Condensing Boiler is designed to extract more heat from a smaller quantity of fuel. The reason is a second unique aluminium heat exchanger. This increase in efficiency is obtained by reducing the temperature of the flue gases to a point where water vapour produced during combustion is condensed out. This releases latent heat which would otherwise escape with the flue gasses. Simply by extracting the heat from the flue gasses, the nett result gives lower gas bills.

Unique heat exchanger extracts heat from otherwise wasted exhaust gasses.



BUILT IN BOILER ENERGY MANAGER WILL REDUCE FUEL DEMAND, IMPROVING SEASONAL EFFICIENCY AND REDUCING RUNNING COSTS.

The boiler comes with a built in single channel 7 day digital timer, which can be utilised to control domestic hot water or heating requirements. If a separate timer for heating is required then it is recommended to fit a room thermostat/timer, available from Ravenheat manufacturing.



Start to save money today. The CSI Condensing Boiler will cut your fuel costs for many years to come. The CSI System boiler has been carefully developed for greater utilisation of energy for super high efficiency. It can be used as a condensing system heating only boiler or in the design of a heating system incorporating a hot water cylinder. Heating output from the boiler to the radiators can be set and controlled by the built in energy manager to operate in condensing mode at all times. During periods of hot water demand the change over to domestic thermostat output enables the cylinder to be re-heated as quickly and efficiently as possible.



Heating thermostat with full control settings carefully monitors the water temp to radiators for maximum efficiency.



Cylinder domestic water thermostat can be set for full control

The CSI Sealed System fully pumped boiler, reduces installation time by eliminating any need for water tanks or pipes in the loft, which could freeze or burst.

- Energy management system.
- Gas valve with flame modulator.
- Built in pump suitable for any type of central heating system.
- Main burner with flame stabiliser designed to operate underall thermal conditions.
- Primary heat exchanger constructed from copper.
- Unique patented condensing heat exchanger for high thermal flue transfer gases to water.
- Built in frost protection.
- Printed circuit board designed to connect to room stat, cylinder stat and/or timer/frost stat.
- On/Off ball valves for shutting off gas and central heating.
- Programmable 7 day module with digital display (optional).
- Operational mode indicator lights.
- Anti-cycle control enables the boiler to be fitted to any large or small heating system design.
- Built in expansion vessel.
- Fully modulating up to 26.6 kW 88.000 Btu's



Ravenheat's European Headquarters, Leeds

Ravenheat has one of the most modern up to date factories in Europe, for design and production of their high quality products.



Ravenheat's European Manufacturing Plant



Quality Assurance

Ravenheat not only operate a quality ISO9002 system. Indeed we hold the highest accolade in design manufacturing excellence, being one of the few manufacturers to hold ISO9001:1994 system, for quality of design, something very few boiler manufacturers can achieve.

This quality system ensures you, the customer, of Ravenheat's commitment to excellence right across the product range.